



Ruby's & Olwethu Projects

COMPANY PROFILE

Contact Details

Office Line : (+27) 87 265 2751

Hotline : (+27) 73 470 7300

info@rubysolwethuprojects.co.za

samphola@gmail.com

www.rnopprojects.co.za



ABOUT US

GET TO KNOW US BETTER

Ruby's and Olwethu Projects is a QSE from Phola Location (Ogies) which was founded by Jabisane Dorah Maswanganne in 2013. She decided to register the company with 3 additional members which are also directors of this company in order to have different expertise.

Today, R&O Projects stands as a formidable force, proudly black female-owned, and excelling in both Mining and Construction. With NHBRC registration and a stellar 6GB PE CIDB grade, we're shaping the future of industry excellence.

OUR MISSION & VISION STATEMENT

Our mission is to deliver outstanding building and civil construction services, dependable mining solutions, and high-quality plant and equipment rentals. We are dedicated to achieving excellence in every project, ensuring customer satisfaction, safety, and environmental sustainability through our expertise, innovation, and commitment. Our goal is to foster the growth and success of our clients and the communities we serve.

Our vision is to be a leading provider of superior construction, mining services, and equipment solutions. By continuously innovating and upholding the highest standards, we aim to drive sustainable progress and create lasting value for our clients and communities.



VALUES

Care

We care about the environment , people and the communities that we operate in.

Relationship

We believe in maintaining a healthy relationships with our suppliers, customers and employees.

Development

We invest in developing our employees and the people that live in areas that we operate in.

COMPANY REGISTRATION, AND CERTIFICATIONS

At Ruby's & Olwethu Projects (R&O Projects), quality isn't a goal; it's our unwavering commitment, ensuring every project we undertake reflects our dedication to excellence. The company is registered with CIDB,NHBRC and ISO:

- Co Reg No: 2013/030895/07
- Tax Ref No: IT-9875351158 VAT-4720272303
- PAYE-7700800982
- CSD No: MAAA0244638
- CIDB Grade 6 GB PE and NHBRC
- ISO 9001:2015
- ISO 14001:2015
- ISO 45001:2018

OUR BUILDING & CIVIL CONSTRUCTION PROJECT

We take pride in offering top-tier Building & Civil Construction services, delivering quality and reliability in every project



MANAGEMENT TEAM EXPERIENCE AND QUALIFICATIONS

Over a decade of refined skills and a comprehensive understanding of industry dynamics, trends, and successful solution delivery.

Dorah Maswanganne is the founder of the company, she is responsible for smooth handling of company's finances. She has over 15 years experience in a mining sector.

Alberto Maswanganne is one of the company's shareholder and he has over 30 years experience in building construction.

Samuel Maswanganne is a Chemical Engineering graduate from the University of Johannesburg and Explosive Engineering from the University of Pretoria, with excellent business management skills who is the main engine drive of the business. He has about 10 years experience in business management in Mining and construction industry

Wendy Makhubele is our Office Administrator who has been with us for over a year. She has over 10 years experience working as an Administrator, 1 year in a Banking Sector and she hold a National Diploma in Marketing and a National Certificate in Management Development.

Nomaswazi Makhanya is our Site Administrator and she has been working with us for over 7 years. She is responsible for employee's contracts and compliance in all our sites. She hold a National Certificate in Marketing and Bookkeeping.

Bonisiwe Ngwenya is our Intern who works closely works with Wendy to gain more experience in the business.

Zinhle Nkabinde is our Intern who works closely with Nomaswazi to gain more experience in our company, she hold a National Certificate in Human Resource.

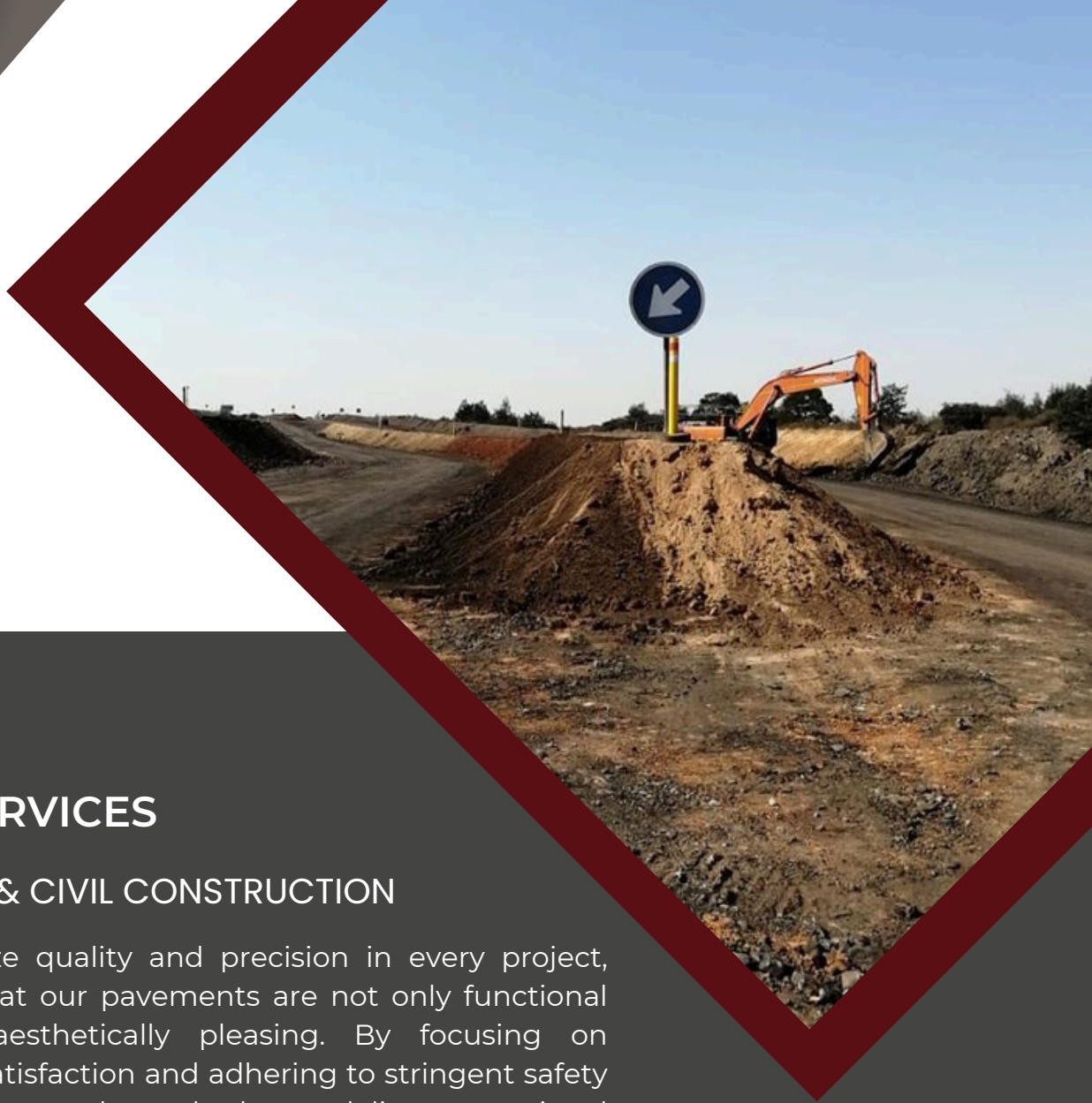
OUR MACHINERY EQUIPMENT

Our Plant & Equipment Hire service provides access to top-quality machinery, helping you meet your project needs efficiently and effectively.

OUR MACHINERY

- 2 x Single Cab Bakkies
- 4 x Twin Cab Bakkies
- 1 x TLB
- 1 x Excavator
- 1 x Grader 16H
- 2 x Water Bowser 23 000L
- 4 x Mobile Toilets





OUR SERVICES

BUILDING & CIVIL CONSTRUCTION

We prioritize quality and precision in every project, ensuring that our pavements are not only functional but also aesthetically pleasing. By focusing on customer satisfaction and adhering to stringent safety and environmental standards, we deliver exceptional results that stand the test of time.

General building

- Houses
- Schools
- Shopping Centers

Civil Construction

- Slabs
- Pavements
- Roads
- Construction



MORE SERVICES

MINING SERVICES AND SUPPLIES

- Grading
- Safety berms
- Installation of signs and delineators
- Supplying of construction materials
- Blasting materials
- haul road construction and maintenance

PLANT AND EQUIPMENT HIRE

- Excavators
- Graders
- TLB
- LDV
- Mobile Toilets
- Temporary offices structures
- Water bowsers

OUR CLIENT

We prioritize understanding and meeting our clients' needs, ensuring that every project is tailored to their specific requirements and delivered to the highest standards.

Our dedication to safety is unwavering; we implement rigorous safety protocols and continuous training programs to protect our workers, clients, and the community.

GLENCORE



thungela





THANK YOU

Thank you for taking the time to learn about our business. We appreciate your interest and are eager to explore how we can serve your needs with excellence and dedication.

Company Name: Ruby's & Olwethu Projects (Pty) Ltd

Co Reg No: 2013/030895/07

Tax Ref No: IT-9875351158 VAT-4720272303

PAYE: 7700800982

CSD No: MAAA0244638

WE LOOK FORWARD TO HEAR FROM YOU

Telephone Contact

087 265 2751 / 073 470 7300
083 710 9378

Email

info@rubysolwethuprojects.co.za
samphola@gmail.com

Website

<https://web.rnoprojects.co.za>

Head Office

2753 Noni Street ,Phola Location ,
Ogies , Emalahleni, Mpumalanga ,
2230, South Africa.

Satellite Office

35 Geringer street,
Del Judor, Witbank, Mpumalanga
1035, South Africa